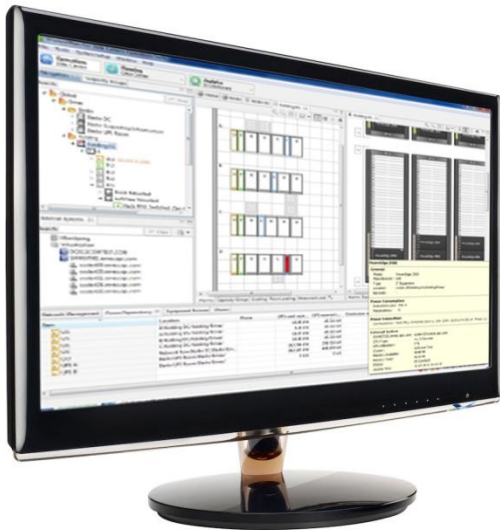


StruxureWare™ Data Center Operation

HP Universal Configuration Management Data Base (uCMDB) integration for converged data center management

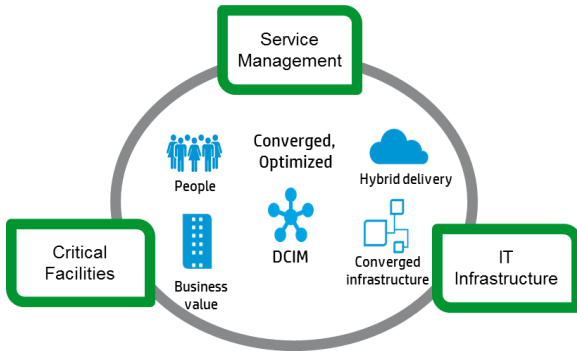


Integration of IT service management best practices into the DCIM solution



StruxureWare for Data Centers

Converged Management Consulting Services



Utilizing Schneider Electric's **StruxureWare for Data Centers**, Hewlett Packard's **Converged Management Consulting Services** provides holistic management and integrated IT/Facility solutions resulting in greater agility, efficiency and cost savings for the business.

Schneider Electric Data Center Infrastructure Management (DCIM)

StruxureWare Data Center Expert

A scalable monitoring system which collects, organizes and distributes critical alerts, provides site surveillance and security and designated information in real time, providing a unified view of complex physical infrastructure environments from anywhere on the network.

StruxureWare Data Center Operation

Optimizes management of the data center physical infrastructure through an operations framework. The application ties real-time physical infrastructure management of space, power, and cooling capacities, and its potential impact, to physical servers hosting virtual machines via the uCMDB connector to Hewlett Packard management software.

Hewlett Packard Converged Management Consulting Services (CMCS)

Provides your organization with the consulting and implementation capabilities to manage your data center infrastructure, end-to-end, through a single pane of glass. Hewlett Packard experts integrate IT, facility and service management based on DCIM technologies.

Schneider Electric's StruxureWare for Data Centers suite, combined with Hewlett Packard's Converged Management Consulting Service provides a holistic management and integrated IT/Facility solution resulting in greater agility, efficiency and cost savings for your business.

Via an integration into Hewlett Packard's Universal Configuration Management Database, StruxureWare for Data Centers and the Converged Management Consulting Service provide customers with converged enterprise resource planning solutions aligning management tools that span facilities, IT and IT Service Management (ITSM) operations for traditional and hybrid service delivery.

Hewlett Packard Converged Management Consulting Service

Main features

- DCIM and ITSM interoperability.
- Single-pane-of-glass visibility.
- Inclusion of people, process & service delivery within infrastructure and IT services.
- Strategy, design and implementation across traditionally segregated domains.

Key benefits

Capacity

- Manage capacity constraints within virtual and physical layers.
- Rapid location of available resources (space, power, cooling, network, IP, etc.).

Intelligence

- Manage change and enforce best practices and policies across IT and infrastructure.
- Automatically maintain compliance with internal and external regulatory requirements.
- True linkage of workloads-to-watts, enabling per-process total cost of ownership.

Efficiency

- Improve capital resource efficiency and management, and full spectrum lifecycle management.
- Manage data center energy and operating costs.
- Visibility of infrastructure impact to end users.

What the Schneider Electric and Hewlett Packard partnership will bring

- End-to-end portfolio of services and facility, IT and service management expertise to deliver complex, multi-vendor data center projects.
- Combined power of Schneider Electric's world-leading DCIM solution with Hewlett Packard's complete IT Operations and Management Software portfolio.
- Integration of ITSM best practices into the DCIM solution.

